

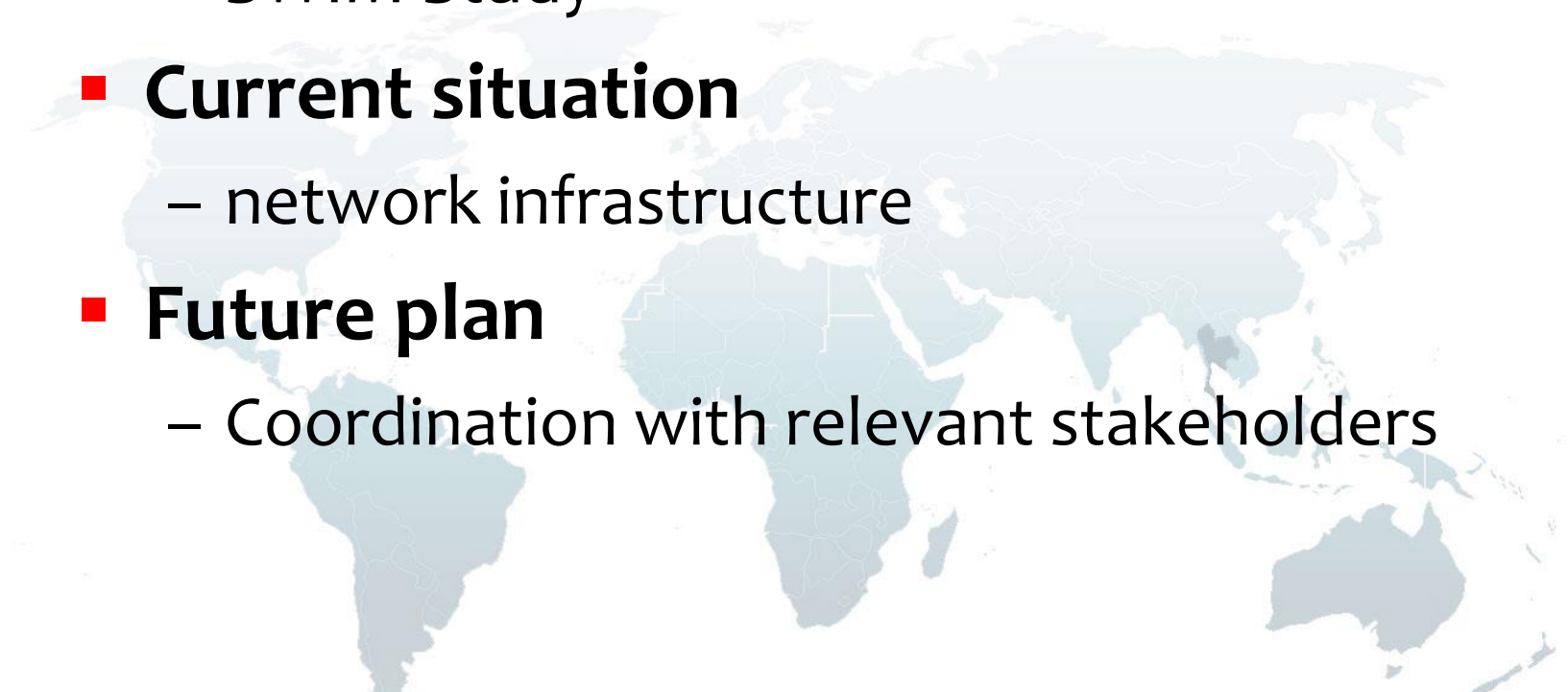
Update on AEROTHAI's SWIM activities

Chonlawit Banphawatthanarak
AEROTHAI



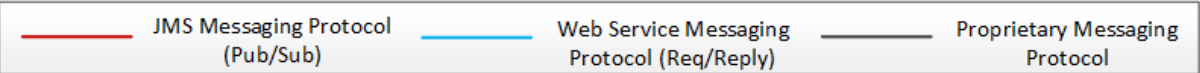
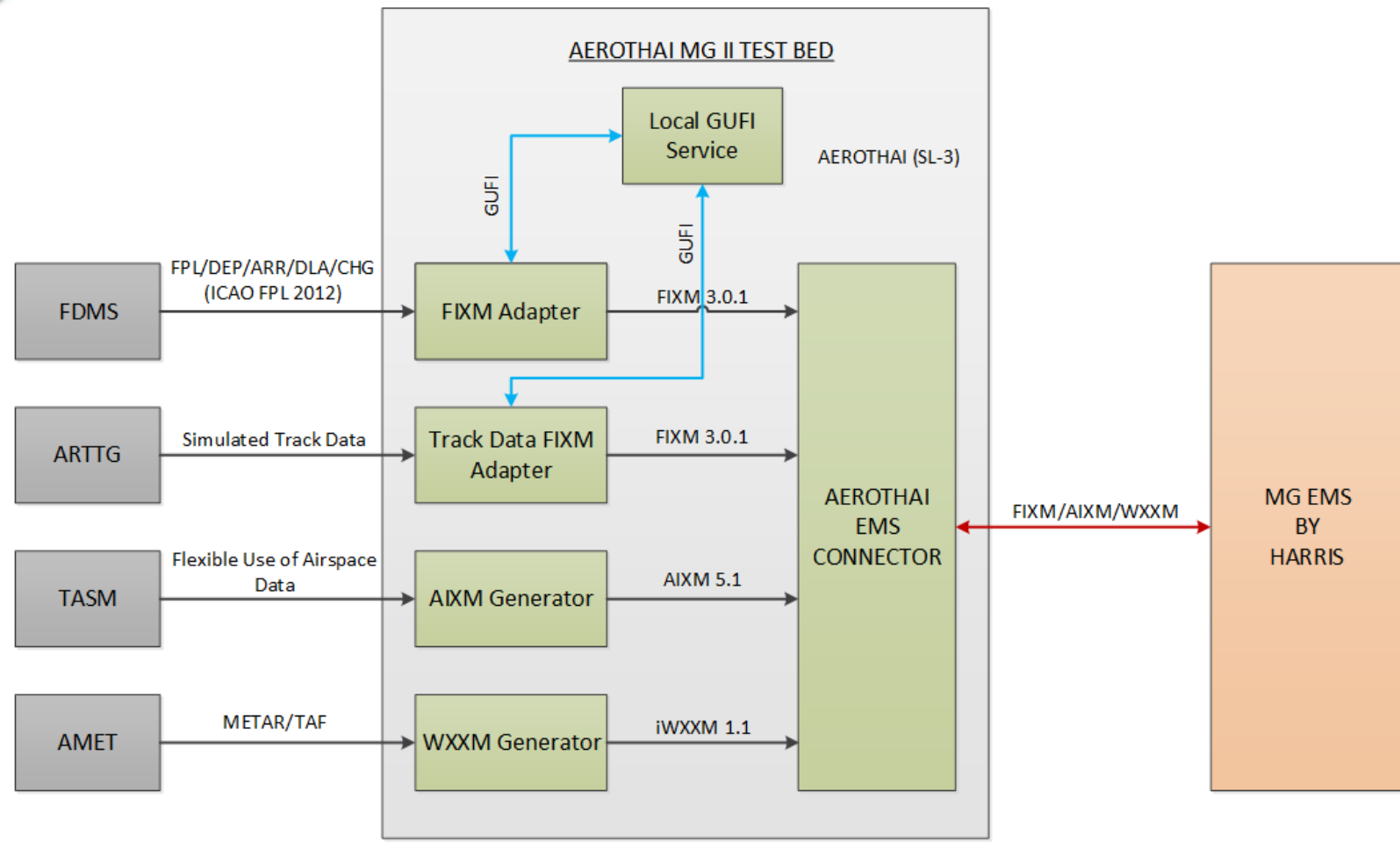


- **Research and development**
 - Mini-global participation
 - SWIM Study
- **Current situation**
 - network infrastructure
- **Future plan**
 - Coordination with relevant stakeholders





R & D – Mini-Global participation





R & D – Mini-Global participation

Data Source	Message	Standard
FDMS	FPL/DEP/ARR/DLA/CHG	FIXM v3.0.1
ARTTG	Track Data	FIXM v3.0.1
TASM	NOTAM	AIXM v5.1
AMET	TAF	iWXXM v1.1

*FDMS: Flight Data Management System

**ARTTG: AEROTHAI Track Generator

***TASM: Pre-Tactical Airspace Management Database

****AMET: Advanced MET Information Database



R & D – SWIM Study

■ Objectives / Scope

- To study SWIM, especially on the SOA concepts, in order to start developing how SWIM will be incorporated within AEROTHAI environment.
- Using development projects that AEROTHAI has been developing as reference systems for analysis.
- Using information available from various such as FAA's SWIM, Eurocontrol's SESAR, etc.

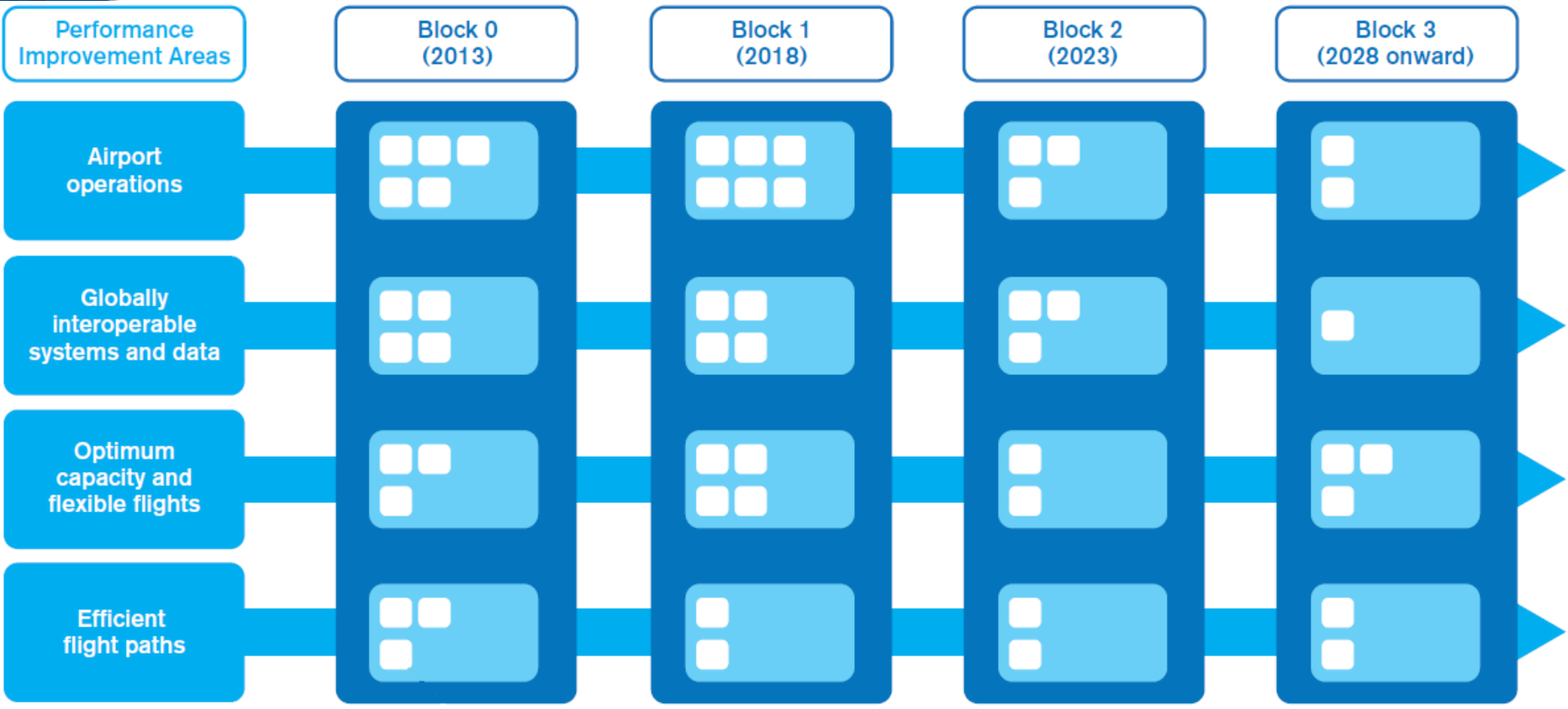


R & D – SWIM Study





R & D – SWIM Study





R & D – SWIM Study

■ **SWIM and ASBU**

– B1-ACDM

– B0-DATM

– B1-AMET

– B2-FICE

– B3-FICE

– B3-TBO

– B1-DATM

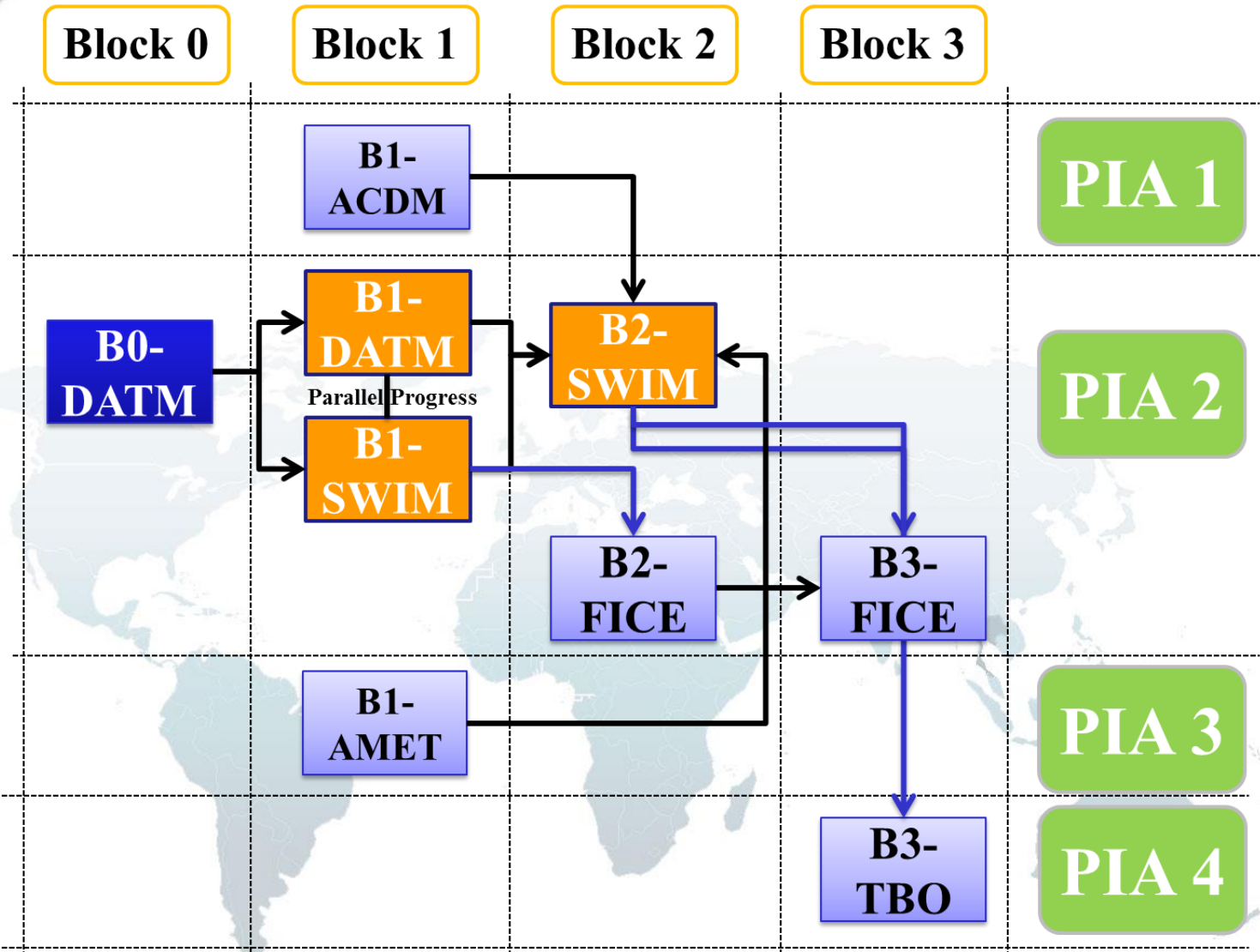
– B1-SWIM

– B2-SWIM





R & D – SWIM Study





R & D – SWIM Study

- **SWIM involves with various programs and systems.**
- **SWIM needs coordination with many stakeholders.**
- **Plans have been proposed by ICAO in ASBU, GANP, APAC seamless ATM plan, etc.**
- **Many parties are working, e.g. FAA, Eurocontrol, etc.**



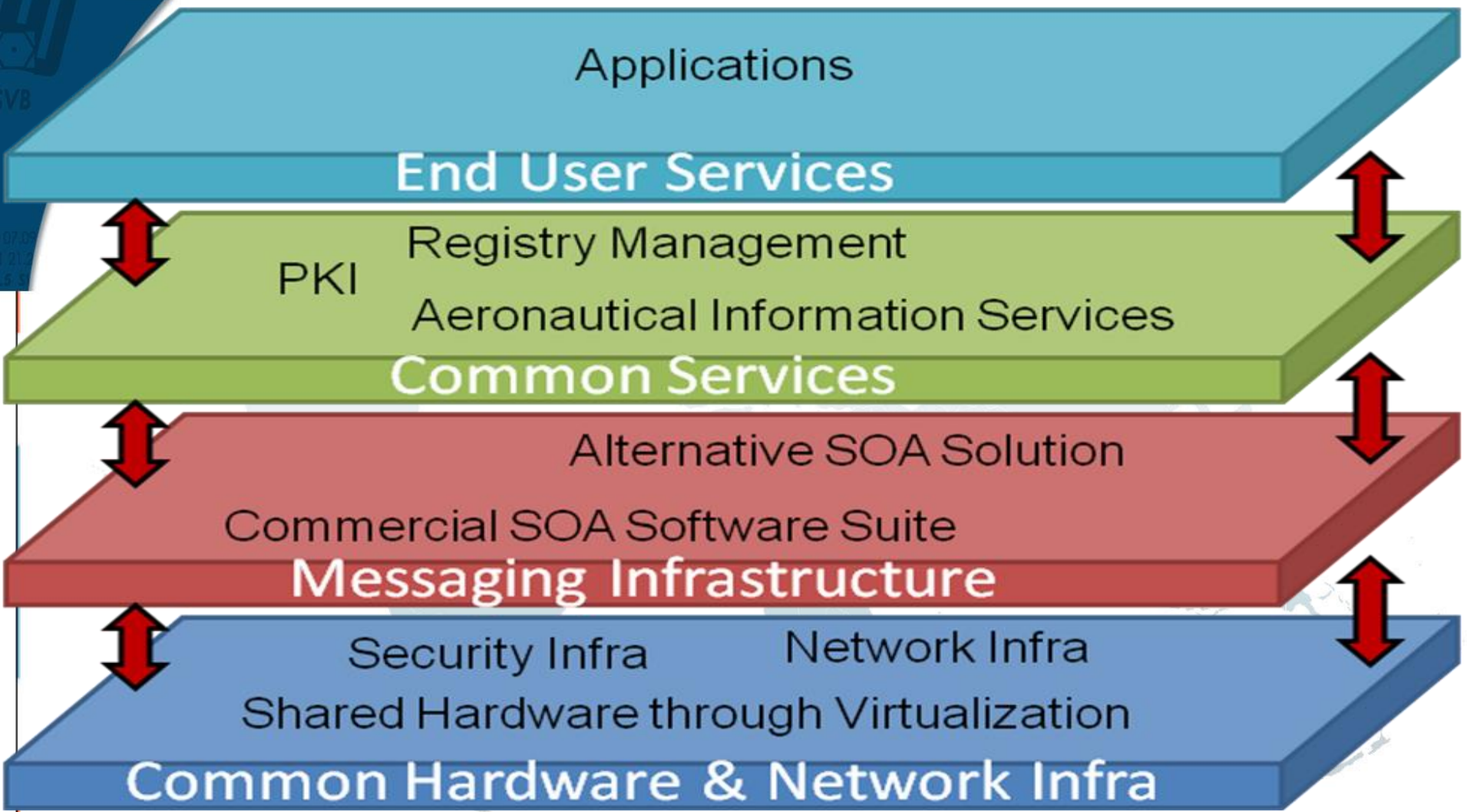
R & D – SWIM Study

- **SWIM will need**
 - Common Network Infrastructure
 - SWIM Technical Infrastructure
 - SWIM Life Cycle Management
 - SWIM Service Governance





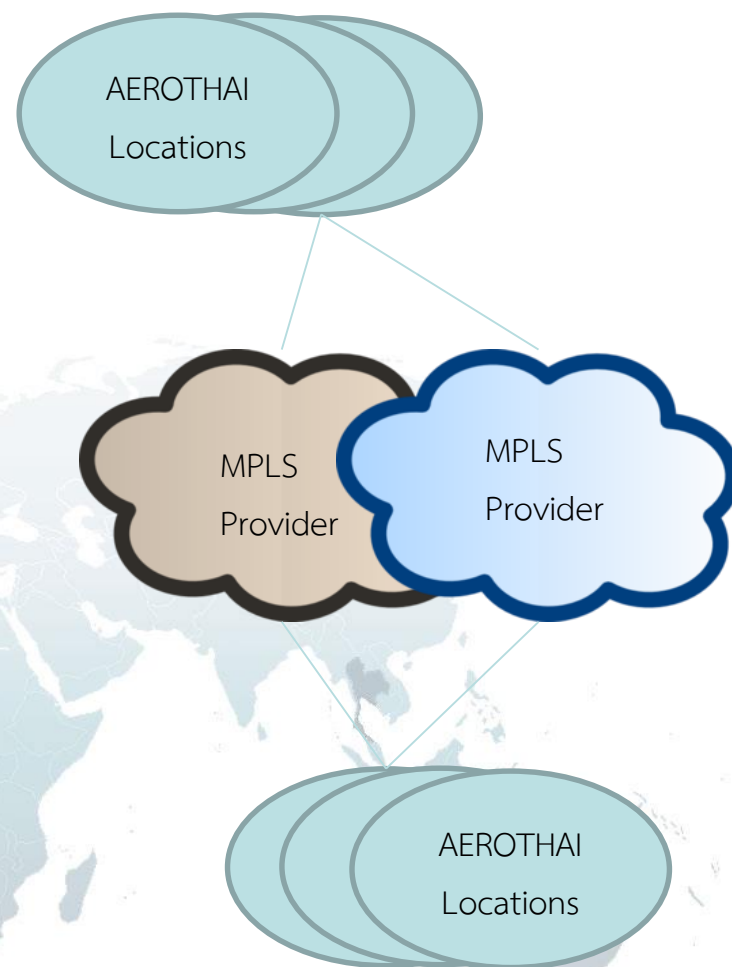
R & D – SWIM Study





Current Situation

- **Network Infrastructure**
 - MPLS network from multiple providers.
 - Managed by dedicated center for network connections within AEROTHAI.
 - Connect different offices and replace current legacy internal connections.





Future Plan

- **Coordination with relevant stakeholders**
 - Internal departments/sections
 - External organizations
 - CAAT, MET department, etc.
- **Development of national-level plan and implementation process.**
- **Thus what is important is
COORDINATIONS!!!!**



AEROTHAI
Aeronautical Radio of Thailand LTD.

Questions and Comments

